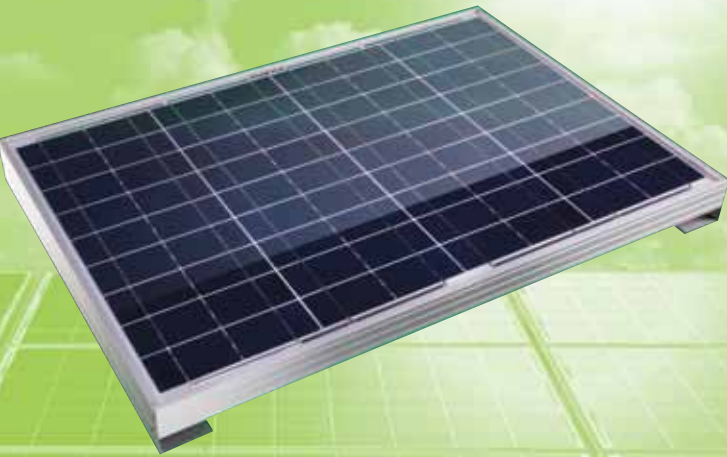


# Harness the Power of the Sun...



...with the **SOLAR 40 Battery Charger System**

...the first expandable system that allows you to simply plug-in additional panels

Not sure what you need?.. First, fit the MASTER panel.

**40Watts**

If you need more power, simply plug in one panel at a time. It's Expandable...



+ 40 watts  
+ 40 watts  
+ 40 watts

...up to a maximum of 4 panels for a total of

**160Watts**

## SOLAR 40 Battery Charger system

### So, how does it work?

Throughout daylight hours the Solar panel charges your battery. When needed the stored battery power will be used.

How much battery power you consume depends upon your lifestyle, size of your caravan or motorhome and whether you tour all year and the number of people.

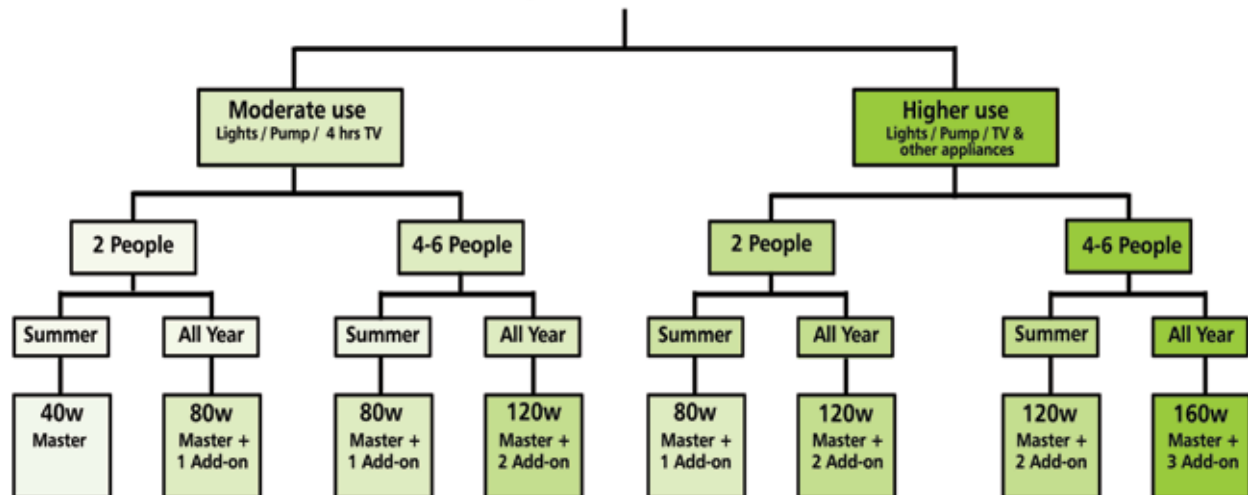
The flow chart bottom centre is an aid to help you determine the sort of capacity you may require. However, if you're unsure first install a 40W MASTER Panel and see how you manage.

If you need more generating capacity simply connect a 40W ADD-ON Panel. The SOLAR 40 system has a capacity of 160 Watts.

- Become Power Independent
- A system that's expandable - 40 to 160 watts
- ADD-ON Panels simply plug together
- Charges in all daylight conditions
- Protects and maintains your battery
- Integrated Roof Mounting Brackets
- One of the most compact systems available
- Easy to install - no special tools required



### So, what do I need?



The performance of the solar panel and its ability to charge your battery will be dependent upon the quality of ambient daylight. In full sunlight, it would be 100% efficient, sunny intervals 80% and cloudy 50%.

VISION PLUS

# SOLAR 40 Battery Charger System

The SOLAR 40 Battery Charger System is designed as an expandable system for those looking for power independence but unsure of their power requirements.

The system is designed around the 40W MASTER Panel and the high specification Power Controller which allows the addition of up to three ADD-ON Panels to give a maximum capacity of 160W.

Once the MASTER Panel is installed, ADD-ON Panels simply glue into place, no special tool or drilling of holes required.

The ADD-ON Panels come fitted with the female link cable with integrated waterproof cap, plus the 3 metres of white male Link cable to allow maximum flexibility when locating additional panels on the roof.

## MASTER Panel includes

- 40 Watt hour solar panel
- 12 Amp Voltage Charge controller
- Roof mount cable gland
- 5 metres of power cable
- 350 mm female link-cable with water proof cap
- In-line fuse
- Connectors & Fittings
- Full Instructions

## ADD-ON Panel includes

- 40 Watt hour solar panel
- 3 metres of link cable in white
- 350 mm female link-cable with water proof cap
- Connectors & Fittings
- Full Instructions



## Specification

- 20 Year warranty on cell output
- IP68 Rating for Link Plugs
- Panel Dimensions: 660 x 456 x 57 mm
- Panel Weight: 3.8Kg
- Operating Temperature: -40° to +85°C

The chart below shows examples of appliance power consumption in both Amps and Watts.

Equipment	Power usage in Amps	Running time in Hours	Amp hours used	Watt hours used (=Amps multiplied by voltage - 12v)
Fluorescent light	0.75	x 3.00	2.25	x 12 27
Reading lamps x 2	1.5	x 2.00	3.00	x 12 36
Colour TV	3	x 2.50	7.50	x 12 90
Water Pump	7	x 0.50	3.50	x 12 42

Total **195**

In the example above a 40 watt panel will satisfy the requirement based on five hours of sunshine. That is 40watts x 5hours=200Watts

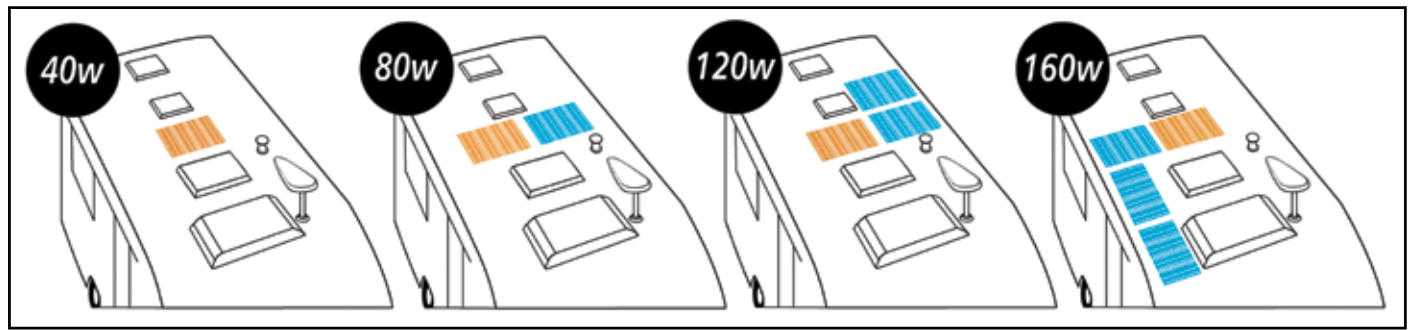
**VISION PLUS**  
....keeping you in the picture

VISION PLUS  
8 Finch Close  
Lenton Lane  
Nottingham  
NG7 2NN

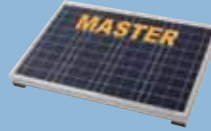
0115 986 7151

info@visionplus.co.uk  
www.visionplus.co.uk

VISION PLUS is a trading name of Grade UK Limited

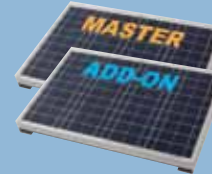


**First, the MASTER.**



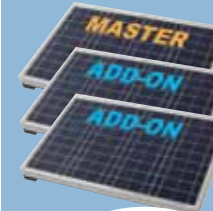
**= 40w**

**Need more power?**



**= 80w**

**ADD more panels.**

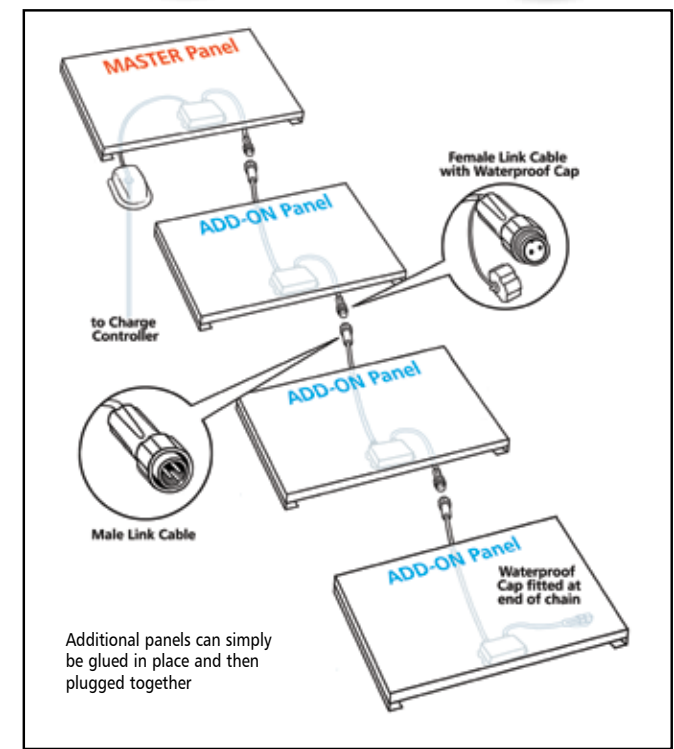
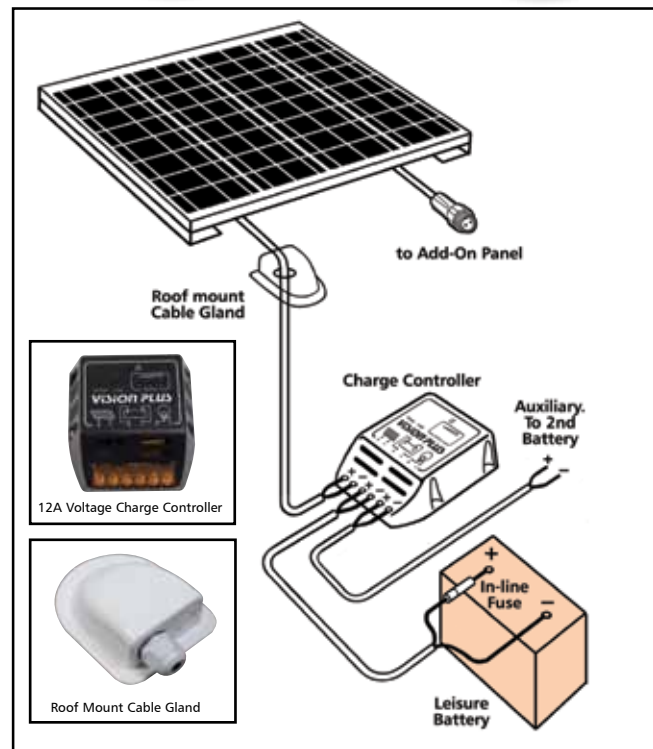


**= 120w**

**It's Expandable.**



**= 160w**



Additional panels can simply be glued in place and then plugged together